

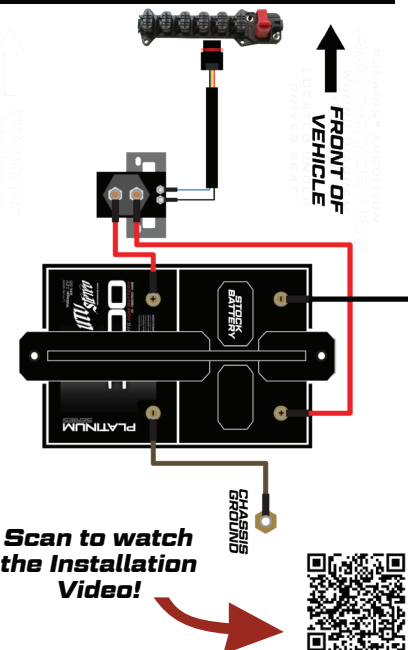
# POLARIS XPEDITION 2ND BATTERY KIT

PART #: UTVS-XPD-2BATT-KIT

## PARTS LIST:

UTVS 1200 Battery	x1
80A Isolator	x1
Battery Tray	x1
Top Bracket	x1
4 AWG Red Wire	x2
4 AWG Black Ground Wire	x1
Accessory Plug Harness	x1
Mounting Hardware:	
Self Tapping Screws	x2
Split Washers	x2
Flat Washers	x2
Bolts	x6

## WIRE DIAGRAM



1. Remove the 2 bolts from under the driver's Seat.  
Remove seat from vehicle



2. Remove battery cover and disconnect the OEM battery



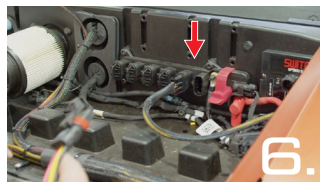
3. Remove the battery strap and pull the OEM battery out of vehicle



4. Remove the grille



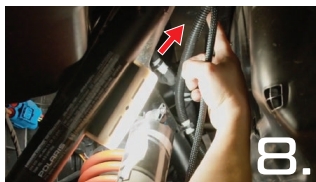
5. Pull hood latch and remove hood



6. Plug the included harness into pulse bar as shown



7. Run harness along red wire, feeding through opening



8. Continue to run harness to the battery compartment



9. Pull harness into the battery compartment



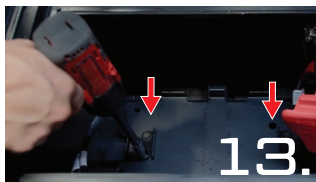
10. Remove ALL the nuts on the isolator



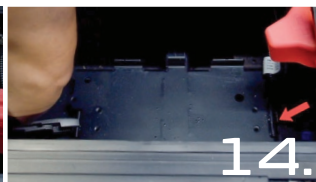
11. Place the SHORT red wire on the side shown here and tighten securely



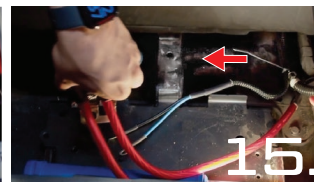
12. Place the LONG red wire on the other side and tighten securely



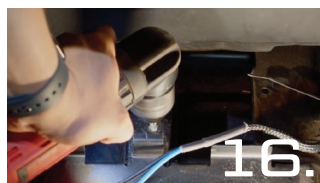
13. Remove the brackets shown here



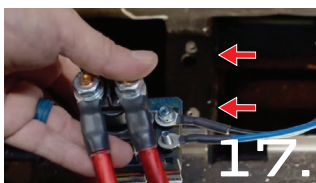
14. Bend the tabs on both sides so they lay flat



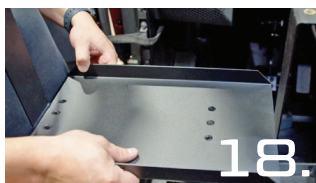
15. Position isolator and mark install holes



16. Drill the previously marked holes as shown



17. Place Black and Blue leads onto isolator and use included hardware to secure in newly drilled holes



18. For vehicles with evap canister place the battery tray with distant holes facing toward the center console  
Reverse if no evap canister



19. Secure tray using the included counter sunk screws  
6 holes, only use 4



20. Tuck the lead behind the battery tray



21. Loosen chassis ground bolt and attach 2nd battery ground wire  
Tighten securely



22. Place OEM battery back into vehicle



23. Place UTVS 1200 (2nd battery) into vehicle



24. Attach the included battery bracket using the included hardware



25. Connect SHORT red lead and any aftermarket accessories to positive terminal on 2nd battery



26. Take chassis ground wire and secure to negative terminal on 2nd battery



27. Replace the negative lead back onto the OEM battery



28. Replace positive lead on the OEM battery and secure LONG red lead to the OEM battery



29. Test the isolator  
You should hear a click



30. Connect all your aftermarket accessories to your new 2nd battery